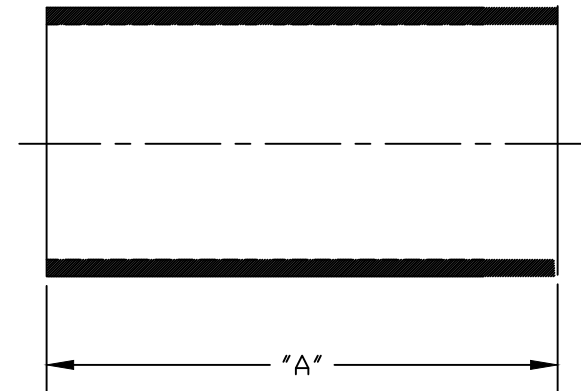
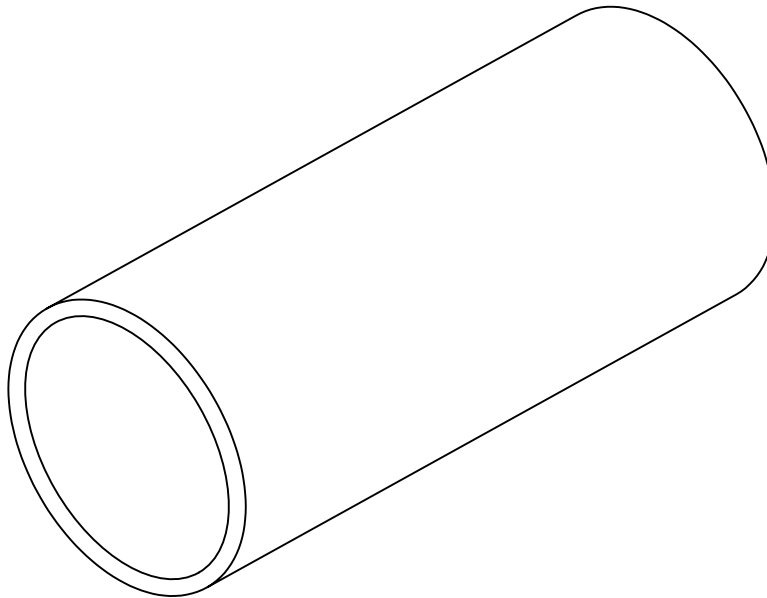
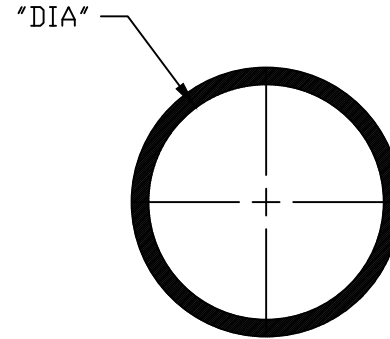


PART NUMBER	SIZE	"DIA"	"A"
6141702	1	1 $\frac{5}{16}$ "	4 $\frac{1}{2}$ "
6141703	1 $\frac{1}{2}$	1 $\frac{7}{8}$ "	4 $\frac{7}{8}$ "
6203000	2	2 $\frac{3}{8}$ "	6 $\frac{1}{16}$ "
6202006	2	2 $\frac{3}{8}$ "	6 $\frac{1}{2}$ "
6203002	2 $\frac{1}{2}$	2 $\frac{7}{8}$ "	6"
6203005	3	3 $\frac{1}{2}$ "	6 $\frac{3}{4}$ "
6203006	3 $\frac{1}{2}$	4"	6 $\frac{3}{8}$ "
6203007	4	4 $\frac{1}{2}$ "	6 $\frac{3}{8}$ "
6202007	4	4 $\frac{1}{2}$ "	9 $\frac{1}{2}$ "
6203009	5	5 $\frac{1}{16}$ "	8 $\frac{3}{4}$ "
6203010	6	6 $\frac{1}{16}$ "	9 $\frac{3}{4}$ "
6202008	6	6 $\frac{1}{16}$ "	12 $\frac{5}{8}$ "

Dimensions are nominal
 Not a Listed product
 Material is Rigid PVC
 Longline fabricated parts with no center stop



CANTEX INC. MINERAL WELLS, TEXAS		
Longline Couplings Fabricated No Center Stop		
Drawn By: D. Gwinn	Date: 3/22/19	Ref. 6141702