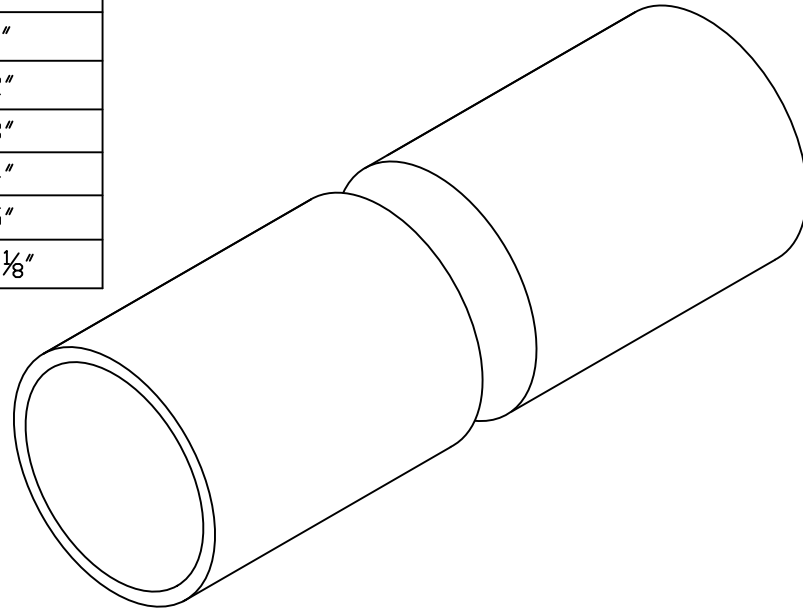
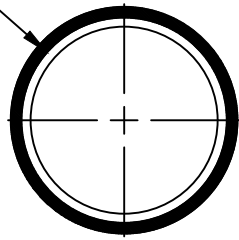


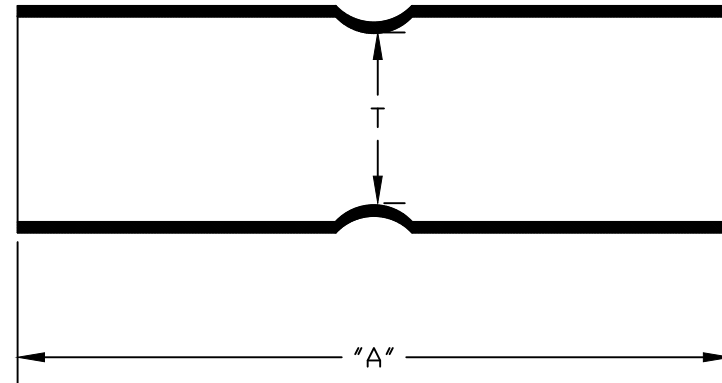
PART NUMBER	SIZE	"DIA"	"A"	"T"
6201003	3/4"	1 1/4"	3 1/2"	3/4"
6201004	1"	1 1/2"	4"	1"
6201001	2"	2 5/8"	5 1/2"	2"
6201002	3"	3 33/64"	6 3/4"	3"
6201000	4"	5"	8"	4"
6151470	5"	6 5/8"	10 9/16"	5"
6141720	6"	8 1/16"	12 3/4"	6 1/8"

All dimensions are nominal

"DIA"



Fabricated coupling
Center stop
Not UL Listed
Material is Rigid PVC
Meets Requirements of NEMA TC3



CANTEX

INC.
Fort Worth, TEXAS

Sch 40 Swedged Coupling. (Fabricated)
Schedule 40 & 80 Special Fittings

Drawn By: CD Branch

Date: 7/9/24

Ref.