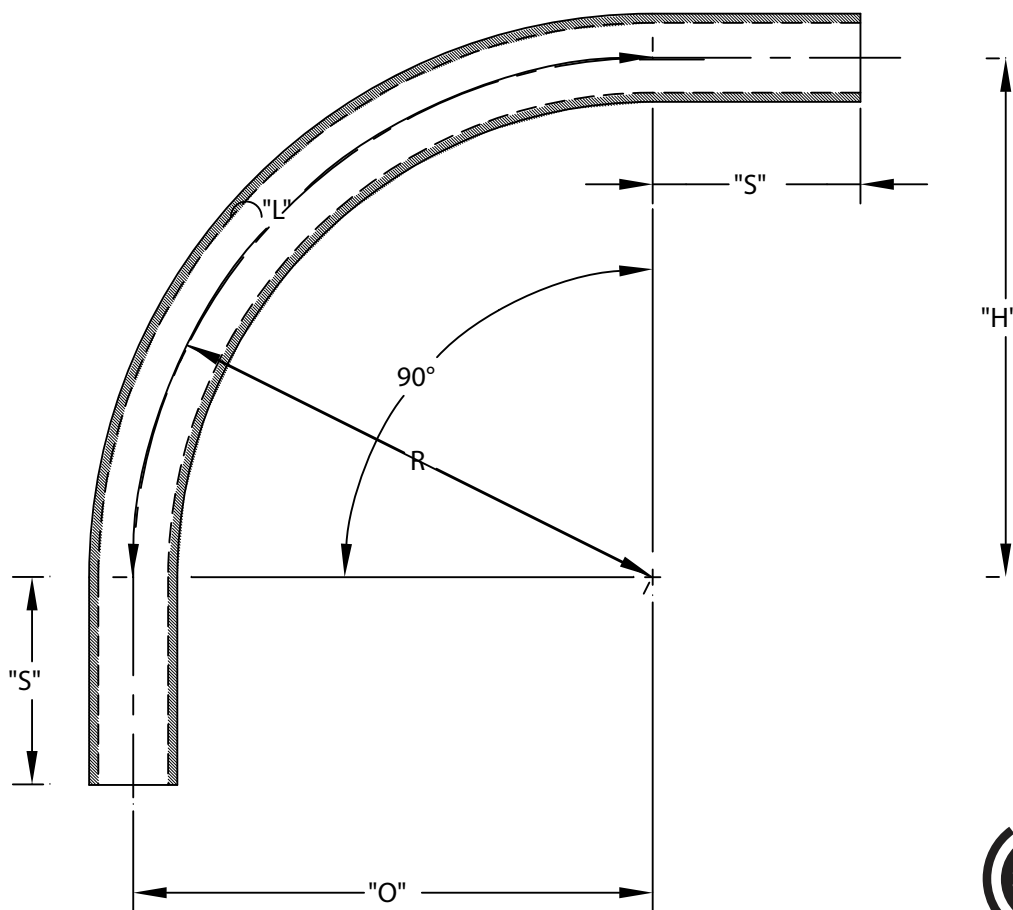


PART NUMBER	SIZE	"R"	"O"	"H"	"S" MIN	"B" MIN	"L"
5133927	4"	120"	120"	120"	3 ⅜"	N/A	188 ½"
5134007	6"	120"	120"	120"	3 ¾"	N/A	188 ½"



ETL LISTED  
 CONFORMS TO UL651  
 ETL CONTROL #3107144  
 CONFORMS TO NEMA TC3  
 SEE NEC ARTICLE 352 FOR USE  
 MATERIAL IS RIGID PVC  
 BEND TOLERANCE IS  $\pm 2^\circ$



**CANTEX**  
 INC.  
 Fort Worth, TEXAS

90° Elbows Plain End  
 Schedule 40 120" Radius Elbows

Drawn By: CD Branch

Date: 10/15/07

Ref.