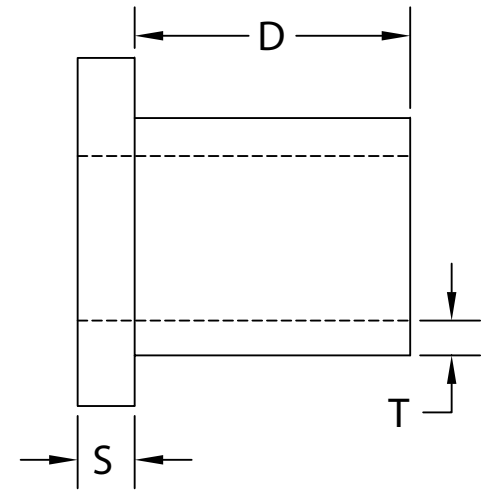
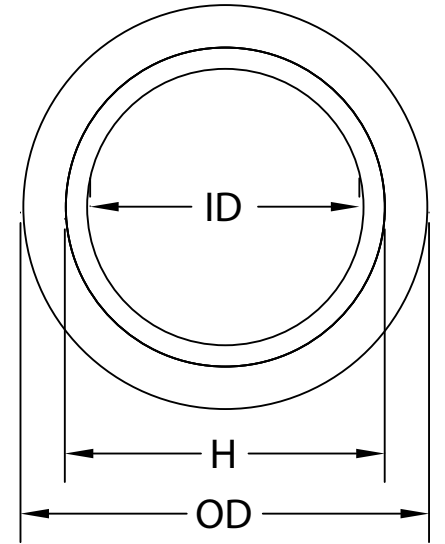


PART NUMBER	SIZE	"D"	"S"	"OD"	"ID"	"H"	"T"
5133715	½" (16)	0.700 MIN.	0.140 MIN.	1.200 ±0.020	0.578 ±MIN.	0.840 ±0.004	0.095 MIN.
5133716	¾" (21)	0.725 MIN.	0.140 MIN.	1.400 ±0.020	0.780 ±MIN.	1.050 ±0.004	0.095 MIN.
5133717	1" (27)	0.950 MIN.	0.140 MIN.	1.700 ±0.020	1.004 ±MIN.	1.315 ±0.005	0.100 MIN.
5133718	1 ¼" (35)	0.990 MIN.	0.250 MIN.	2.000 ±0.020	1.335 ±MIN.	1.660 ±0.005	0.120 MIN.
5133719	1 ½" (41)	1.100 MIN.	0.200 MIN.	2.000 ±0.020	1.564 ±MIN.	1.900 ±0.006	0.120 MIN.
5133720	2" (53)	1.175 MIN.	0.200 MIN.	2.750 ±0.020	2.021 ±MIN.	2.375 ±0.006	0.130 MIN.
5133721	2 ½" (63)	1.650 MIN.	0.300 MIN.	3.350 ±0.025	2.424 ±MIN.	2.875 ±0.007	0.165 MIN.
5133722	3" (78)	1.800 MIN.	0.325 MIN.	4.200 ±0.025	3.008 ±MIN.	3.500 ±0.008	0.216 MIN.
5133723	3 ½" (91)	1.870 MIN.	0.325 MIN.	4.500 ±0.025	3.486 ±MIN.	4.000 ±0.008	0.226 MIN.
5133724	4" (103)	2.020 MIN.	0.250 MIN.	4.910 ±0.030	3.961 ±MIN.	4.500 ±0.009	0.237 MIN.
XXXXXXX	5" (129)	N/A	N/A	N/A	N/A	N/A	N/A
XXXXXXX	6" (155)	N/A	N/A	N/A	N/A	N/A	N/A



NEMA TC 3 COMPLIANT  
ALL DIMENSIONS IN INCHES



TOLERANCES

± 1/16

**CANTEX**  
INC.

Fort Worth, TEXAS

Junction Box Adapters  
Schedule 40 & Schedule 80

Drawn By: CD Branch

Date: 04/04/08

Ref.