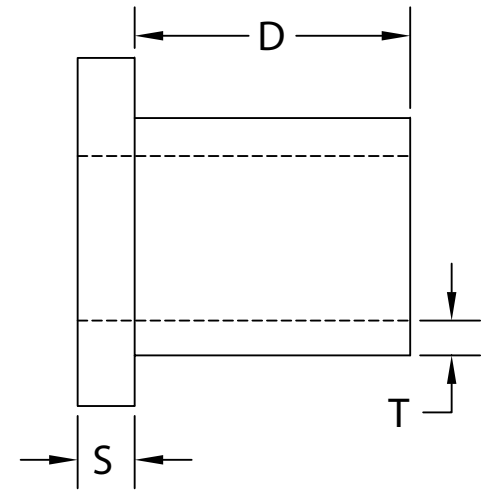
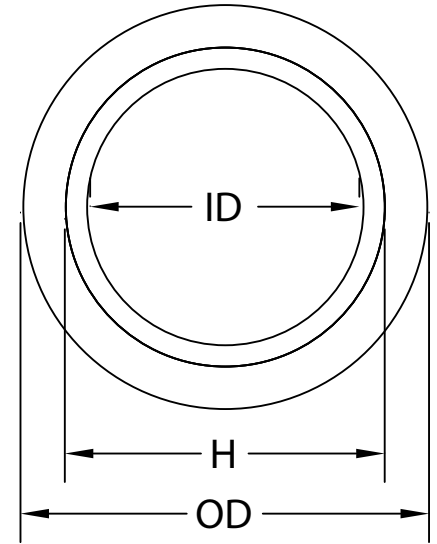


| PART NUMBER | SIZE      | "D"           | "S"           | "OD"            | "ID"           | "H"             | "T"           |
|-------------|-----------|---------------|---------------|-----------------|----------------|-----------------|---------------|
| 5133715     | ½" (16)   | 0.700<br>MIN. | 0.140<br>MIN. | 1.200<br>±0.020 | 0.578<br>±MIN. | 0.840<br>±0.004 | 0.095<br>MIN. |
| 5133716     | ¾" (21)   | 0.725<br>MIN. | 0.140<br>MIN. | 1.400<br>±0.020 | 0.780<br>±MIN. | 1.050<br>±0.004 | 0.095<br>MIN. |
| 5133717     | 1" (27)   | 0.950<br>MIN. | 0.140<br>MIN. | 1.700<br>±0.020 | 1.004<br>±MIN. | 1.315<br>±0.005 | 0.100<br>MIN. |
| 5133718     | 1 ¼" (35) | 0.990<br>MIN. | 0.250<br>MIN. | 2.000<br>±0.020 | 1.335<br>±MIN. | 1.660<br>±0.005 | 0.120<br>MIN. |
| 5133719     | 1 ½" (41) | 1.100<br>MIN. | 0.200<br>MIN. | 2.000<br>±0.020 | 1.564<br>±MIN. | 1.900<br>±0.006 | 0.120<br>MIN. |
| 5133720     | 2" (53)   | 1.175<br>MIN. | 0.200<br>MIN. | 2.750<br>±0.020 | 2.021<br>±MIN. | 2.375<br>±0.006 | 0.130<br>MIN. |
| 5133721     | 2 ½" (63) | 1.650<br>MIN. | 0.300<br>MIN. | 3.350<br>±0.025 | 2.424<br>±MIN. | 2.875<br>±0.007 | 0.165<br>MIN. |
| 5133722     | 3" (78)   | 1.800<br>MIN. | 0.325<br>MIN. | 4.200<br>±0.025 | 3.008<br>±MIN. | 3.500<br>±0.008 | 0.216<br>MIN. |
| 5133723     | 3 ½" (91) | 1.870<br>MIN. | 0.325<br>MIN. | 4.500<br>±0.025 | 3.486<br>±MIN. | 4.000<br>±0.008 | 0.226<br>MIN. |
| 5133724     | 4" (103)  | 2.020<br>MIN. | 0.250<br>MIN. | 4.910<br>±0.030 | 3.961<br>±MIN. | 4.500<br>±0.009 | 0.237<br>MIN. |
| XXXXXXX     | 5" (129)  | N/A           | N/A           | N/A             | N/A            | N/A             | N/A           |
| XXXXXXX     | 6" (155)  | N/A           | N/A           | N/A             | N/A            | N/A             | N/A           |



NEMA TC 3 COMPLIANT  
ALL DIMENSIONS IN INCHES



TOLERANCES

± 1/16

**CANTEX**  
INC.

Fort Worth, TEXAS

Junction Box Adapters  
Schedule 40 & Schedule 80

Drawn By: CD Branch

Date: 04/04/08

Ref.