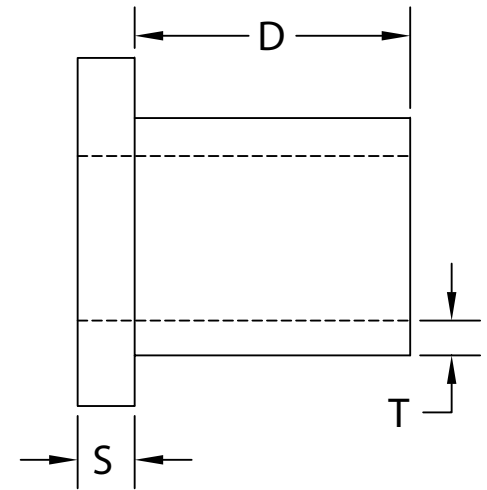
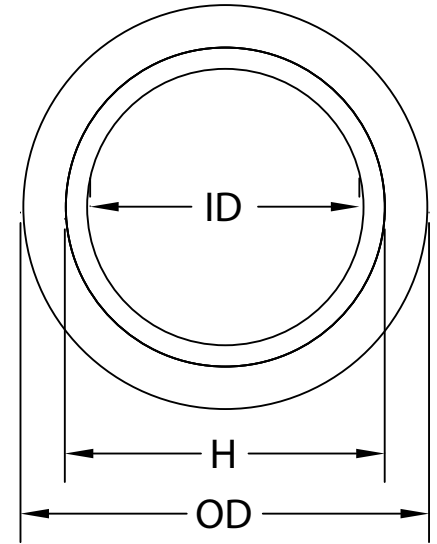


| PART NUMBER | SIZE | "D" | "S" | "OD" | "ID" | "H" | "T" |
|-------------|-----------|---------------|---------------|-----------------|----------------|-----------------|---------------|
| 5133715 | ½" (16) | 0.700 MIN. | 0.140 MIN. | 1.200 ±0.020 | 0.578 ±MIN. | 0.840 ±0.004 | 0.095 MIN. |
| 5133716 | ¾" (21) | 0.725 MIN. | 0.140 MIN. | 1.400 ±0.020 | 0.780 ±MIN. | 1.050 ±0.004 | 0.095 MIN. |
| 5133717 | 1" (27) | 0.950 MIN. | 0.140 MIN. | 1.700 ±0.020 | 1.004 ±MIN. | 1.315 ±0.005 | 0.100 MIN. |
| 5133718 | 1 ¼" (35) | 0.990 MIN. | 0.250 MIN. | 2.000 ±0.020 | 1.335 ±MIN. | 1.660 ±0.005 | 0.120 MIN. |
| 5133719 | 1 ½" (41) | 1.100 MIN. | 0.200 MIN. | 2.000 ±0.020 | 1.564 ±MIN. | 1.900 ±0.006 | 0.120 MIN. |
| 5133720 | 2" (53) | 1.175 MIN. | 0.200 MIN. | 2.750 ±0.020 | 2.021 ±MIN. | 2.375 ±0.006 | 0.130 MIN. |
| 5133721 | 2 ½" (63) | 1.650 MIN. | 0.300 MIN. | 3.350 ±0.025 | 2.424 ±MIN. | 2.875 ±0.007 | 0.165 MIN. |
| 5133722 | 3" (78) | 1.800 MIN. | 0.325 MIN. | 4.200 ±0.025 | 3.008 ±MIN. | 3.500 ±0.008 | 0.216 MIN. |
| 5133723 | 3 ½" (91) | 1.870 MIN. | 0.325 MIN. | 4.500 ±0.025 | 3.486 ±MIN. | 4.000 ±0.008 | 0.226 MIN. |
| 5133724 | 4" (103) | 2.020 MIN. | 0.250 MIN. | 4.910 ±0.030 | 3.961 ±MIN. | 4.500 ±0.009 | 0.237 MIN. |
| XXXXXXX | 5" (129) | N/A | N/A | N/A | N/A | N/A | N/A |
| XXXXXXX | 6" (155) | N/A | N/A | N/A | N/A | N/A | N/A |



NEMA TC 3 COMPLIANT
ALL DIMENSIONS IN INCHES



TOLERANCES

± 1/16

CANTEX
INC.

Fort Worth, TEXAS

Junction Box Adapters
Schedule 40 & Schedule 80

Drawn By: CD Branch

Date: 04/04/08

Ref.